

Courtesy of Placer Title Company, 2 Theater Square, Suite 208, Orinda, CA 94563. Office: 925-253-4810,

Judy Dickey, Broker

BUYER/SELLER COACH

925-376-9458

Information was obtained from reliable sources but there may be some inaccuracies.

Table of Contents

Quality of Life	2
Communities.....	4
Population	7
Commute Time	8
Driving Miles to Bay Bridge	9
Public School Districts	10
Private Schools	12
Colleges and Universities	19
Hospitals	20
Transportation.....	21
Libraries.....	22
Newspapers.....	23
Tennis Courts.....	24
Golf Courses (public)	25
Golf Courses (private)	26
Parks and Recreation	27
Regional Parks	30
Music	31
Performing Arts	35
Sports Events	36
Recreational Sports.....	38
Senior Services	39
Shopping Centers.....	40

Farmer’s Markets.....42
Museums.....43
Hotels and Motels.....45
Airports48
Rental Automobiles49
Driver Information.....51

Quality Of Life

Contra Costa County’s pleasant lifestyle combines Mediterranean climate and scenic surroundings with excellent schools, abundant recreational facilities, a variety of cultural programs and highly developed shopping centers. California’s relaxed living style is enjoyed to its utmost in Contra Costa County.

Contra Costa has a variety of attractive residential areas offering different lifestyles. There is a wide choice of planned unit developments, condominiums,

apartments, country homes and suburban tracts and custom homes of all styles and sizes. Most residential communities provide nearby amenities such as swimming pools, stables, tennis courts and golf courses. Cities are increasingly well planned with ample areas designated for open space. They are well governed by their respective city councils.

Contra Costa County has a place of worship for almost any religious affiliation. With twelve major hospitals, numerous “urgent care” centers, and an extensive

paramedic program, the county health care is excellent.

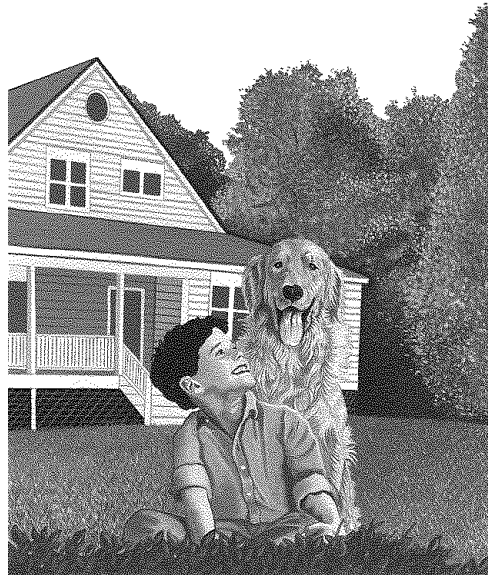
Recreation facilities are abundant in Contra Costa County with nearly 50,000 acres of land dedicated to Regional Parks. Boating, fishing, water sports, trail riding and camping are offered by the 15 large recreational areas.

QUALITY OF LIFE (continued)

Skiing and mountain recreation are available within an easy three hour drive to the Sierra Nevada Range.

Neighborhood parks and community associations offer hundreds of activities, classes and programs for all ages. Golfing and horseback riding facilities are excellent and abundant.

Contra Costa's public school system has an excellent reputation. Educational programs are geared to individual needs. There has been continued growth of educational options open to parents and children, such as the Academics Plus program stressing highly structured course work and the flexible Open Education Program. Contra Costa is noted for its excellent special education programs.



The Contra Costa Community College District is comprised of three colleges: Contra Costa in San Pablo; Diablo Valley in Pleasant Hill; Los Medanos in Pittsburg. In addition to tuition-free courses, the tax supported colleges offer an

array of cultural activities, entertainment, business services and facilities.

Excellent technical and vocational schools are found throughout the county. Four-year college students have a choice of several fine institutions of higher learning in

the area. Among these are Stanford University in Palo Alto, The University of California at Berkeley, California State University at Hayward, Mills College in Oakland and St. Mary's College in Moraga. John F. Kennedy University in Orinda offers advanced degrees in law and business, and is especially designed for the working adult.

Communities

Alamo is located off Highway 680 between Walnut Creek and Danville, this rural town of nearly 12,000 residents still maintains its country atmosphere. Home prices average in the high \$800,000's and are mostly custom built. Roundhill Country Club, with its eighteen-hole golf course, is located at the foothills of Mt. Diablo. Alamo is a community without fast food chains and traffic jams; instead you will find jogging, bicycling, horseback riding, quaint restaurants and excellent schools. Alamo is unincorporated, which means that the County Board of Supervisors governs it in the county seat of Martinez.

Antioch is, at the same time, the oldest and, in many ways, the newest city in the county. The last decade has seen the addition of thousands of new homes in the Antioch area at prices that are a bargain when compared to much of the rest of the county. The Bay Area Rapid Transit District is expanding its train service to include East Contra Costa County with a new station just west of Antioch.
www.ci.antioch.ca.us

Bay Point is a community in change. In 1993, West Pittsburg citizens voted to change the name of their town to Bay Point. The 1980's saw the population double. With the addition of a new BART station and many new homes, the nineties promise to bring more changes to this East Contra Costa community.

Bethel Island is a small delta town, protected from the river by levies. The population is weighted toward the over fifty-five set. Recreation, fishing, golf, boating and the leisure life are the rule in Bethel Island

Blackhawk is a country club community consisting of 4800 acres laid out in eight security gate developments with two eighteen hole golf courses, two tennis, swimming and racquet ball facilities, plus a unique specialty shop and restaurant center. Blackhawk is an elite area with custom homes, many in the million dollar range.

COMMUNITIES (CONTINUED)

Clayton is located in a country setting close to Mt. Diablo State Park. This is a scenic community with a rural feeling. The homes tend to be newer, set among old walnut groves.

Concord, formerly a bedroom community, has experienced phenomenal growth, with a mix of industrial, commercial and residential properties. It is an easy commute on BART to San Francisco. Sun Valley Shopping Center is located in Concord. Sun Valley is one of the largest shopping centers in Northern California, and one of the world's largest air-conditioned, enclosed malls.
www.ci.concord.ca.us

Danville has a quaint, warm shopping area with a Western flavor, offering a full range of shopping services and specialty shops. Although Danville is a city, it still maintains its small community atmosphere. The country club communities of Diablo and Blackhawk lie in the hills surrounding Danville.
www.ci.danville.ca.us

Lafayette is set among 800 acres of wooded, hilly land. It is semi-rural, composed primarily of established homes with a sprinkling of newer and remodeled homes. There is no industry in

Lafayette, but a full range of shopping facilities and excellent restaurants is available. Lafayette has a BART station and easy access to Highway 24, providing an easy commute to San Francisco and neighboring communities.
www.ci.lafayette.ca.us

Martinez is the County seat of Contra Costa, rich in early California history. Its natural harbor has made it a good location for oil refineries, which with government are the largest employers. Situated on the Sacramento River Delta, Martinez has 70 miles of waterfront available for boating and fishing. Martinez offers some of the most affordable housing in the central county area.
www.ci.martinez.ca.us

Moraga is an affluent suburb nestled behind the Berkeley-Oakland hills. It is the home of St. Mary's College, as well as professionals who commute to work in San Francisco, Oakland, Walnut Creek and elsewhere. Single family, ranch style homes predominate, however, there are some very attractive condominium communities, as well.
www.ci.moraga.ca.us

COMMUNITIES (CONTINUED)

O **rinda** is the closest bedroom community to San Francisco in Contra Costa County.

Located on Highway 24 just over the hills from Berkeley, Orinda is comprised of older homes set in wooded, hilly terrain. There are some new, and many remodeled and updated older homes. Most home sites are large, often one-half acre or more.

www.ci.orinda.ca.us

P **leasant Hill** is primarily a residential area with some small shopping centers. There is an ambitious redevelopment project currently approaching completion. Most of the residents live in comfortable, single family homes, but as redevelopment progresses, more condominiums and townhouses are becoming available. Easy access to BART and Interstate 680 provide an easy commute to Oakland, San Francisco and the Peninsula.

www.ci.pleasant-hill.ca.us

R **ichmond** is the largest city in West Contra Costa County.

Located on the peninsula, thirty percent of the housing is multifamily; while there are some apartments, most of the multifamily housing is in the form of duplexes and fourplexes. The majority of the single-family units were built in the 1940's and fifties.

www.ci.richmond.ca.us

S **an Ramon**, located in the heart of the San Ramon Valley, is a newly developed residential area for city workers who prefer to live in the country. The area is rapidly becoming a regional center for national corporations. Thanks to community planning, there will always be pockets of undeveloped recreational space, providing hillside escapes and beautiful views. Located in San Ramon, Canyon Lakes is the largest single residential development in the county. It includes a variety of housing, a man-made lake, and 18-hole golf course, and tennis and swimming facilities.

www.ci.san-ramon.ca.us

W **alnut Creek** has been said to be the financial Mecca of the county. It has earned a reputation as the poshest retail shopping district, with stores ranging from Nordstrom to tiny, exclusive boutiques. Housing is available to a broad variety of tastes and pocket books, from small apartments to luxurious villas in the million dollar range. Walnut Creek is available by BART and Interstate 680 for easy commuting to the West Bay Area.

www.ci.walnut-creek.ca.us



Population

Community

Population

Alamo	12,277
Antioch	76,538
Brentwood	14,493
Clayton.....	10,029
Concord	111,837
Danville	38,104
El Cerrito	23,278
Lafayette	23,597
Martinez.....	35,360
Moraga.....	16,330
Orinda	16,900
Pinole	18,167
Pittsburg.....	50,832
Pleasant Hill.....	33,169
Richmond.....	91,252
San Pablo	25,906
San Ramon.....	41,930
Walnut Creek.....	64,710

CONTRA COSTA COUNTY *.....879,206

This figure includes unincorporated areas not included in the city figures.

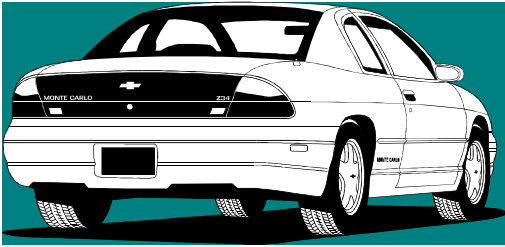
Source: Demographic Research Unit of California Department of Finance and the 1990 Census



Commute Time TO SAN FRANCISCO

From	Miles	Auto *	Bart.....	Bus
El Cerrito.....	14	25/40.....	35	40
Richmond.....	17	25/40.....	41	35
Orinda.....	18	25/45.....	26.....	30
Lafayette.....	21	30/50.....	30	42
Walnut Creek	26	30/55.....	35	46
Pleasant Hill	30	35/60.....	37	45
Concord.....	30	45/70.....	43	53
Bay Point.....	35	60/90.....	53	

* The first figure is driving time during non-commute hours, the second figure is driving time during normal commute hours. All driving time varies with the day of the week, time of day, and weather conditions.



Driving miles to S.F. Bay Bridge Toll Plaza

City	Via I-680/Hwy 24	Via I-80/Hwy 4	Via I-680/ I-580
Alamo	23.....	n/a.....	40
Antioch	41.....	46	
Blackhawk	52.....	59	
Brentwood.....	52.....	59	
Concord.....	22.....	31	
Danville.....	28.....	n/a.....	37
El Cerrito	n/a.....	6	
El Sobrante.....	n/a.....	10	
Lafayette	13		
Martinez.....	26.....	25	
Moraga.....	13		
Orinda	10		
Pinole	n/a.....	14	
Pittsburg.....	37.....	40	
Pleasant Hill.....	22.....	33	
Richmond.....	n/a.....	9	
San Pablo	n/a.....	10	
San Ramon.....	34.....	n/a.....	32
Walnut Creek.....	18.....	40	

Public School Districts

GENERAL INFORMATION

Contra Costa County Office of Education
77 Santa Barbara Road
Pleasant Hill, CA 94523
942.3388

ALAMO, DANVILLE & SAN RAMON

San Ramon
Unified School District
699 Old Orchard Drive,
Danville, CA 94526
552.5500

ANTIOCH

Antioch Unified School District
510 "G" Street,
Antioch, CA 94509
757.7110

CLAYTON, CONCORD, PLEASANT HILL & WALNUT CREEK ⁽¹⁾

Mt. Diablo Unified School District
1936 Carlotta Drive,
Concord, CA
682.8000

EL CERRITO, RICHMOND & SAN PABLO

Richmond Unified School District
1108 Bissell Avenue,
Richmond, CA 94801
234.3825

LAFAYETTE ⁽¹⁾

Lafayette School District
3477 School Street,
Lafayette, CA 94549
284.7011

MARTINEZ

Martinez Unified School District
921 Susana,
Martinez, CA 94553
313.0480

Public Schools (continued)

MORAGA ⁽¹⁾

Moraga School District
1540 School Street, Moraga, CA
94556
376.5943

ORINDA ⁽¹⁾

Orinda Union School District
8 Altarinda Road, Orinda, CA
94563
254.4901

PITTSBURG

Pittsburg Unified School District
2000 Railroad Avenue,
Pittsburg, CA 94565
473.4000

WALNUT CREEK ⁽¹⁾

Walnut Creek School District
960 Ygnacio Valley Road, Walnut
Creek, CA 94596
944.6850

**ACALANES UNION HIGH
SCHOOL DISTRICT** ⁽¹⁾

1212 Pleasant Hill Road,
Lafayette, CA 94549
935.2800

(1) The Acalanes Union High School District includes schools in Lafayette, Moraga, Orinda and Walnut Creek.





Private Schools

ALAMO

Creative Learning Center
(Pre through Kinder)
120 Hemme Ave.
837.4044

Dorris-Eaton School: Alamo Campus
(Transitional K)
1287 Stone Valley Road
837.7248

ANTIOCH

Antioch Christian School
(K - 5th)
415 W. 6th Street
778.1639

Antioch Christian Tutorial School
(K - 12th)
640 East Tregallas Road
757.1837

Child Day Schools
(K-5)
112 E. Tregallas Road
754.0144

Delta Christian Jr./Sr. High School
(7th - 12th)
625 W. Fourth Street
831.1210

Heritage Baptist Academy
(K - 8th)
525 East 18th Street
778.2234

Hilltop Christian School
(Pre - 8th)
320 Worrell Road
778.0214

Holy Rosary School
(Pre - 8th)
25 East 15th Street
757.1270

BRENTWOOD

Brentwood Christian School
(K - 9th)
50 Birch
634.1415

Private Schools (continued)

Dainty Center (Pre - 3rd)
1265 Dainty Avenue
634.4539

CONCORD

Bianchi Elementary School
(Pre - 6th)
4347 Cowell Road
680.8707

Carondelet High School
(9th - 12th . women)
1133 Winton Drive
686.5353

Christian Life Elementary School
(Pre - 6th)
3950 Clayton Road
676.6422

Concordia School (Pre - 8th)
2352 Fifth Avenue
689.6910

De La Salle High School
(9th - 12th . men)
1130 Winton Drive
686.3310

Kinder.Care Learning Center
(Pre & Kinder)
1551 Bailey Road
682.9560

Queen of All Saints
(K - 8th)
2391 Grant Street
685.8700

St. Agnes Elementary School
(K - 8th)
3886 Chestnut Avenue
689.3990

St. Francis of Assisi
(K - 8th)
866 Oak Grove Road
682.5414

Tabernacle Baptist School
(Pre - 8th)
4380 Concord Blvd.
684.9169

DANVILLE

Athenian School
(6th - 12th)
2100 Mt. Diablo Scenic Blvd.,
Danville
837.5375

Bianchi School
(Pre & K)
909 Camino Ramon
838.8541

Das Montessori Kinderhaus
(Pre)
101 Sonora Avenue
831.6199

Fountainhead Montessori School
(Pre & K)
939 El Pintado Road
820.1343

Private Schools (continued)

San Ramon Valley Christian
Academy (K - 8th)
220 West El Pintado Road,
838.9622

St. Isidore Elementary School
(K - 8th)
435 Lagondo Way
837.2977

EL CERRITO

Das Montessori Kinderhaus
(Pre)
1532 Richmond Avenue
831.6199

Prospect School
(K - 6th)
2060 Tapscott Avenue
232.4123

Sierra School
(K - 6th)
960 Avis Drive
527.4714

St. Jerome Elementary School
(K - 8th)
320 San Carlos Avenue
525.9484

St. John The Baptist School
(K - 8th)
11156 San Pablo Avenue
234.2244

Tehiyah Day School
(K - 8th)
2603 Tassajara Avenue
233.3013

Windrush School
(K - 8th)
1800 Elm Street
233.4477

EL SOBRANTE

Bethel Christian Academy
(K - 8TH)
431 Rincon Lane
223.9550

Calvary Christian Academy &
Preschool (Pre - 12th)
4892 San Pablo Dam Road
222.3828

El Sobrante Christian School
(K - 8th)
5100 Argyle Road
223.2242

LAFAYETTE

Child Day School
(Pre & K)
1049 Stuart Street
284.7092

Diablo Valley Montessori School
(Pre & K)
3390 Deer Hill Road
283.6036

Private Schools (continued)

Montessori Children's House
(Pre & K)
955A Moraga Road
284.9710

St. Perpetua School (K - 8th)
3445 Hamlin Road
284.1640

Temple Isaiah Religious School
(K . 12th)
3800 Mt. Diablo Blvd.
283.8575

White Pony and Meher School
(Pre - 5th)
999 Leland Drive
938.4826

MARTINEZ
Agape Christian School
(Pre - 5th)
444 Fig Tree Lane
228.8155

Concordia School (Pre & K)
100 Church Street
689.6910

Higher Heights Christian Preschool
(Pre)
245 Morello Avenue
229.4000

Patchin's Elementary School
(Pre -. 6th)
1200 Palm Avenue,
228.1295

St. Catherine of Siena School
(K . 8th)
604 Mellus Street
228.4140

MORAGA
Carden School of Moraga
(Pre - 5th)
1678 School Street
376.7900

Child Day School
(Pre)
372 Park Street
376.5110

ORINDA
Contra Costa Alternative School
(8th - 12th)
10 Irwin Way
254.0199

Fountainhead Montessori School
(Pre - 3rd)
24 Orinda Way
254.7110

North Bay Orinda School
(7th - 12th)
350 Camino Pablo
254.7553

PACHECO
Diablo Valley Montessori School
(Pre - 6th)
106 Deodar Drive
798.1668

Private Schools (continued)

PINOLE

Appian Way Happy Lion School
(Pre & K)
2612 Appian Way
222.2416

St. Joseph School
(K - 8th)
1961 Plum Street
724.0242

PITTSBURG

Christian Center School
(Pre - 12th)
1210 Stoneman Avenue
439.2552

Concordia School
(Pre & K)
195 Alvarado Avenue
689.6910

Kinder.Care
(Pre - 12 years old)
150 East Leland Road
432.8800

Pittsburg Christian School
(K - 12th)
293 Alves Lane
458.1106

Railroad Junction School
(K)
2224 Railroad Avenue
427.2000

Shore Acres Christian School
(K - 12th)
500 Pacifica Avenue
458.2838

St. Peter Martyr School
(Pre - 8th)
425 West 4th Street
439.1014

PLEASANT HILL

Christ the King Elementary School
(K - 8th)
195 Brandon Road
685.1109

Fountainhead Montessori School
(Pre - K)
490 Golf Club Road
685.2949

La Cheim School
(Special Education)
1700 Oak Park Blvd.
930.7994

Mary Jane's Preschool &
Kindergarten (Pre & K)
2902 Vessing Road
935.3084

Pioneer Montessori
2702 Pleasant Hill Road
947.2340

Pleasant Hill Junior Academy
(K - 10th)
796 Grayson Road
934.9261

Private Schools (continued)

RICHMOND

Canterbury Elementary School
(K - 6th)
3120 Shane Drive
222.5050

La Petite Academy
(Pre & K)
3891 Lakeside Drive
222.3070

Mt. Olive Lutheran School
(K - 3rd)
1800 Barrett Avenue
233.1932

Nomura School
(K - 6th)
1615 Carlson Blvd.
528.1727

Salesian High School
(9th - 12th)
2851 Salesian Avenue
234.4433

St. Cornelius School
(K - 8th)
201 28th Street
232.3326

St. David's Elementary School
(Pre - 8th)
871 Sonoma Street
232.2283

Trinity Lutheran School
(K - 6th)
3301 Morningside Drive,
223.8822

Vista Christian School
(K - 8th)
2354 Andrade Avenue
237.4981

Western Regional Christian Academy
(K - 12th)
3501 Macdonald Avenue,
233.4661

SAN RAMON

Acorn Learning Center
(Pre)
5075 Crow Canyon Road
837.1145

Child Day School
(Pre & K)
18868 Bollinger Canyon Road,
820.2515

Diablo Hills Country School
(Pre - K)
2701 Hooper Road
831.1210

WALNUT CREEK

Alice's Montessori (Pre - K)
3158 Putnam Blvd.
947.0603

Berean Christian High School
(9th - 12th)
245 El Divisadero Avenue,
945 . 6464

Concordia School (Pre & K)
1543 Sunnyvale Avenue
689.6910

Private Schools (continued)

Contra Costa
Christian High School
(9th - 12th)
2721 Larkey Lane
934.4964

Contra Costa
Jewish Community Center
(Pre & K)
2071 Tice Valley Blvd.
938.7800

Dorris.Eaton School (Pre - 8th)
1847 Newell Avenue
933.5225

Morning Star PreSchool &
Kindergarten (Toddler - 6 years)
2131 Olympic Blvd.
947.2952

Palmer School (K - 8th)
2740 Jones Road
934.4888

Saybrook Learning Centers
(Pre & Day Care)
1355 Walden Road
937.8211

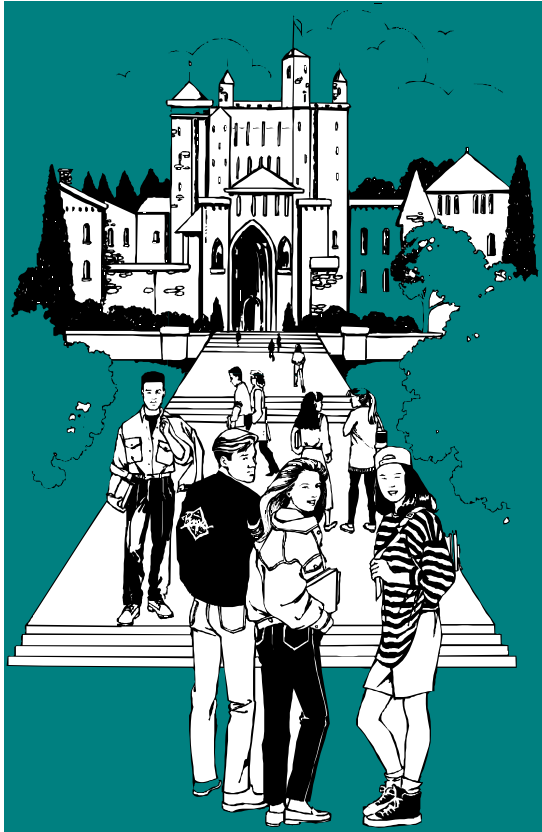
Seven Hills School
(Pre - 8th)
975 North San Carlos Dr.
933.0666

Springs Academy
(K-12)
1963 Tice Valley Blvd.
253.1906

St. Mary's School
(K - 8th)
1158 Bomt Lane
935.5054

Walnut Creek Christian Academy
(K - 8th)
2336 Buena Vista Avenue
935.1587

Woodlands Christian Academy
2721 Larkey Lane
945.6863



Colleges & Universities

UNIVERSITIES

University of California,
Berkeley - 642-6000

California State University,
Hayward - 881-3000

Contra Costa Center, Pleasant Hill
(C.S.U. Hayward Extension)
945-8700

Stanford University,
Palo Alto - 723-2300

ADDITIONAL CENTERS OF HIGHER EDUCATION

St. Mary's College,
Moraga, CA 94575
376-4411

Center for Higher Education
3150 Crow Canyon Place,
San Ramon, CA 94583
866-1822

John F. Kennedy University,
Orinda
253-2211

COMMUNITY COLLEGES

Contra Costa College
2600 Mission Bell Drive, San
Pablo, CA 94806

Diablo Valley College
321 Golf Club Road, Pleasant Hill,
CA 94523
685-1230

Los Medanos College
2700 East Leland Road, Pittsburg,
CA, 94565
439-2181

Hospitals

ANTIOCH

Sutter Delta Medical Center
3901 Lone Tree Way,
Antioch, CA 94509
779.7200

CONCORD

Mt. Diablo Medical Center
2540 East Street,
Concord, CA 94520
682.8200

MARTINEZ

Kaiser Permanente Medical Center
200 Muir Road,
Martinez CA 94553
372.1000

Contra Costa Regional Medical Center
2500 Alhambra Avenue,
Martinez, CA 94553
370.5000

Veterans' Hospital
150 Muir Road,
Martinez, CA 94553
228.6800

PINOLE

Doctor's Hospital
2151 Appian Way,
Pinole, CA 94564
510 / 724.5000

RICHMOND

Kaiser Permanente Medical Center
910 Nevin Avenue
Richmond, CA 94604
510 / 307.1500

SAN PABLO

Doctors Medical Center
San Pablo Campus
2000 Vale Road,
San Pablo, CA 94806
510 / 970.5000

SAN RAMON

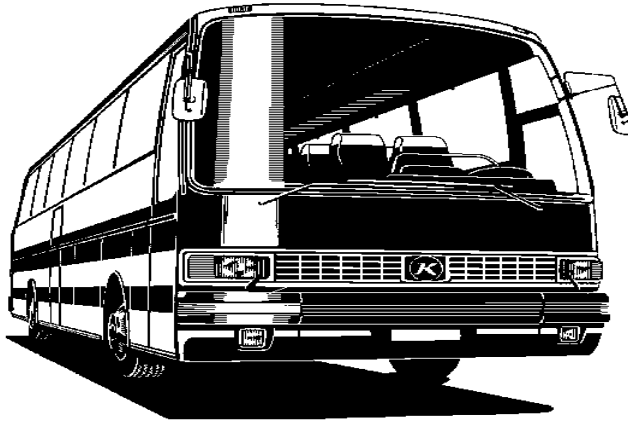
San Ramon Regional Medical Center
6001 Norris Canyon Road,
San Ramon, CA 94583
275.9200

WALNUT CREEK

Kaiser Permanente Medical Center
1425 South Main Street,
Walnut Creek, CA 94596
295.4000

John Muir Medical Center
1601 Ygnacio Valley Road, Walnut
Creek, CA 94598
939.3000

In addition to these major medical facilities, there are a number of "urgent care" facilities located throughout the county. Additional major medical facilities are also available outside the county, including the University of California and the Stanford University Medical Centers.



Transportation

AC TRANSIT

Alameda-Contra Costa Transit
Bus service between San Francisco
and Alameda and Contra Costa
Counties
464-7133

BART

Bay Area Rapid Transit
Train service between Daly City, San
Francisco and Alameda and Contra
Costa Counties
933-2278;
464-7133 Office of Passenger Service

BART EXPRESS BUS

Bus service connecting BART
stations with outlying areas in eastern
and western Contra Costa County
788-2278; 788-BART

COUNTY CONNECTION

Bus service within and between cities
in Contra Costa County
676-7500

TRI DELTA TRANSIT

Bus service in the cities of Pittsburg,
Bay Point, Antioch and Shore Acres
754-4040; 754-2278

RIDES for commuters

RIDES provides Bay Area
commuters with information
regarding car-pooling and/or van
pooling. Vanpools are small vans
used by Bay Area commuters for
various Contra Costa County cities to
San Francisco and peninsula
destinations
1 800 755-7665

In addition to these services, taxi service is
available in most areas.



Public Libraries

ANTIOCH

501 West 18th Street
757-2100

BRENTWOOD

751 3rd Street
634-4101

CONCORD

2900 Salvio
646-5455

DANVILLE

555 South Hartz
837-4889

LAFAYETTE

952 Moraga Road
283-3872

MARTINEZ

740 Court Street
646-2898

MORAGA

1500 St. Mary's Road
376-6852

ORINDA

2 Irwin Way
254-2184

PITTSBURG

80 Power Avenue
427-8390

PLEASANT HILL

1750 Oak Park Blvd.
646-6423

SAN RAMON

100 Montgomery
973.2850

WALNUT CREEK

1644 North Broadway
646-6773
2661 Oak Grove Road
938-1481

LIBRARY ADMINISTRATION

1750 Oak Park Boulevard,
Pleasant Hill
646-6423

Newspapers

ANTIOCH *Daily Ledger*
Daily
754.9000

BRENTWOOD *News*
Semiweekly
634.2125

CLAYTON VALLEY *Forum*
Clayton, Concord area
Monthly
672.4321

CONTRA COSTA *Sun*
Weekly
284.4444

CONTRA COSTA *Times*
Daily
933.1717

The Herald / daily
829.7323

MARTINEZ *Gazette*
Daily
228.6400

PITTSBURG *Post Dispatch*
Daily
432.7336



ROSSMOOR *News*
Weekly
939.0714

SAN FRANCISCO *Chronicle*
Daily
800 323.9000

SAN FRANCISCO *Examiner*
Daily
800 345.3926

OAKLAND *Tribune*
Daily
645.2000

VALLEY *Times*
San Ramon Valley
Daily
820.4011



Tennis Courts

Many parks and schools have tennis courts. Call the East Bay Regional Park District at 531-9300 for additional information. In Contra Costa County, many of the new subdivisions have a tennis court or courts for the use of the homeowners.

ALAMO

Round Hill Country Club
3169 Roundhill Road
837.0558

CONCORD

Big C Athletic Club
1381 Galaxy Way
671.2110

DANVILLE

Crow Canyon Country Club (Private Membership)
711 Silver Lake Drive
866.2672

LAFAYETTE

Lafayette Tennis Club
3125 Camino Diablo
376.1622

MORAGA

Moraga Tennis & Swim Club
1161 Larch Avenue
376.1622

ORINDA

Orindawoods
501 Orindawoods Drive
254.1065

Sleepy Hollow Swim & Tennis Club
! Sunnyside Lane
254.1126

PLEASANT HILL

Valley Heights Racquet Club
2261 Morello Avenue
798.2533

WALNUT CREEK

Club Sport Valley Vista Tennis Club
3737 Valley Vista Road
934.4050

Walnut Creek Civic Park
1650 North Broadway
943.5853

Walnut Creek Tennis Center
1751 Heather Drive
945.0105



Golf Courses (Public)

ANTIOCH

Antioch Public Golf Course
1200 Lone Tree Way
757.5200

Lone Tree
4800 Golf Course Road
706.4220

BETHEL ISLAND

Bethel Island Golf Course
3303 Gateway Road
684.2654

BRENTWOOD

Brentwood Country Club
1740 Balfour Road
516.3400

CLAYTON

Oakhurst Country Club
8000 Clayton Road
672.9737

CONCORD

Buchanan Field
1091 Concord Avenue
682.1846

Diablo Creek Golf Course
4050 Port Chicago Highway
686.6262

MARTINEZ

Pine Meadow Public Golf Course
451 Vine Hill Way
228.2881

PITTSBURG

Delta View Golf Course
2242 Golf Club Road
439.9766

SAN RAMON

San Ramon Royal Vista Golf Course
9430 Fircrest Lane
828.6100

Canyon Lakes
640 Bollinger Canyon Way
735.6511

WALNUT CREEK

Boundary Oaks Golf Course
3800 Valley Vista Road
934.6211

Diablo Hills Golf Course
1551 Marchbanks Drive
939.7372



Golf Courses (Private)

ALAMO

Round Hill Country Club
3169 Roundhill Road
934.8211
1 course; 18 holes

DANVILLE

Blackhawk Country Club
599 Blackhawk Club Drive
736.6500
2 courses; 18 holes each

Crow Canyon Country Club

711 Silver Lake Drive
735.5700
1 course; 18 holes

DIABLO

Diablo Country Club
One Club House Road
837-9233
1 course; 18 holes

EL CERRITO

Mira Vista Country Club
7900 Cutting Blvd.
233-7550
1 course; 18 holes

PLEASANT HILL

Contra Costa Country Club
801 Golf Club Road
798.7135
1 course; 18 holes

MORAGA

Moraga Country Club
1600 St. Andrews Drive
376-2253
1 course; 18 holes

ORINDA

Orinda Country Club
315 Camino Sobrante
254-0811
1 course; 18 holes

PLEASANT HILL

Contra Costa Country Club
801 Golf Club Road
798.7135

WALNUT CREEK

Rossmoor Retirement Community Stanley Dollar Drive
933-2607
1 course; 18 holes

This is the end of Part 1, see Part 2 that follows separately.

Prepared by Placer Title Company
2 Theater Square, Orinda, CA 94563
925-253-4810

Judy Dickey, CRS
Licensed Real Estate Broker, State of California
BUYER/SELLER COACH
307 Draeger Drive
Moraga, CA 94556
925-376-9458

E-mail: judy@judydickey.com
Web site: www.judydickey.com
